



Altimate
RIGGING SOLUTIONS

PRODUCT CATALOGUE

WWW.ALTIMATE-RIGGING.COM

Introduction

The needs of the entertainment industry are unique : no other industry requires simultaneous control of numerous hoists, with systems being setup and dismantled just a few days later.

We have an extensive experience working with electric hoists for shows and events, and we felt that there was a gap in what hoist manufacturers were offering.

That's why we have been manufacturing electric chain hoist controllers for 25 years.

Our customers value having solutions that suits the way they work, as much as dealing with people that understand their applications.

MotionRoad 12

The ultimate touring solution : flexible, strong, powerful



If you want the best possible tool to setup your stage wherever you go, look no further !

Designed closely with our customers, this controller has an incredible set of features that can be extended with future firmware update. It has not only flexible control and connection possibilities, but small feature that make all the difference when the schedule is tight !

1.

Smart hoist selection

Each channel has an ADJUST position to quickly operate one hoist without having to deselect and re-select all the others.

Each selector has RGB LED that indicates the status of the channel : On, Off, Adjust, Going Up & Going Down.



2.

Phase reversal switches

Something has not been wired correctly and one of your hoist is going in the opposite direction ?

By using these switches, you can easily reverse the phase of each channel without modifying your current selection.



3.

Local or remote control

A switch allows you to select between the 2 control modes and the remote comes with a 15 meters cable as standard, offering the same hoist selection capabilities.

Don't like to be tied ?
An optional wireless module is available !



12 CHANNELS



MotionRoad 12 Feature :

Control Type	Hoist Type	Channels	Reference	WxDxH (cm)
Local & Remote Control	DC Hoists	12	UMC12TD	58,5x62,5x70

Accessories	
MotionPad 12 (remote for wired control)	DR12W
MotionPad 12 (remote for wired and wireless control)	DR12WWL
MotionConnect (wireless module)	UMCRTX1
Neutrik Cable XLR 8+2	UCLINK8+2_1M50 ... 300M
AC Adaptor	UMDCHARGEUR24
USB Loader	UMDUSBNC10RS485

- Individual or group control of 12 DC hoists with a capacity ranging from 250 to 1000 kg.
- Controllers can be linked with our digital link system for up to 128 simultaneous channels.
- Thermal-magnetic circuit breakers to protect hoists from surges and short-circuit.
- Group stop if a breaker of the controller or linked system trips, with key for function by-pass.
- Reset button proceeds to internal checks and makes sure the operator has been made aware an emergency stop happened before the system can be operated again.
- 32A power input, with power out to daisy chain several controllers for power supply.
- Automatic phase alignment of the power input.
- CEE, Harting and Socapex outputs to suit every configuration.
- 13U flight case on wheels with a drawer to store the remote and cable.
- AUX 230V power output for any device such as laptop, phone...

MotionHall

Advanced control for fixed installations and venues



Boasting safety features, flexible controls and a quality finish, our digital controller range suits the most demanding installations.

Various formats of wired and/or wireless remote can be used to match your working habits.

1.

Smart hoist selection

Each channel has an ADJUST position to quickly operate a single hoist without having to deselect and re-select all the hoist from you current selection.

Each selector has a RGB LED that indicates the status of the channel : On, Off, Adjust, Going Up & Going Down.



2.

Hybrid contactors

This new generation of contactor is specially designed for electric motors, providing increased safety and longer lifespan.

It is easy to adjust to your hoists' power requirement, and brings a modular design that makes maintenance easier and quicker.



3.

Local or remote control

A switch allows you to select between the 2 control modes and the remote comes with a 15 meters cable as standard, offering the same hoist selection capabilities.

Don't like to be tied up ? An optional wireless module is available !



12 TO 128 CHANNELS



MotionHall Features

Control Type	Hoists Type	Channels	WxDxH (cm)	WxDxH (cm)
Local & Remote	DC Hoists	12	50x23x100	UMCDC12DWHYB
		24		UMCDC24DWHYB
		36		UMCDC36DWHYB
		48		UMCDC48DWHYB
	LVC Hoists	12		UMCDC12DW
		24		UMCDC24DW
		36		UMCDC36DW
		48		UMCDC48DW

Accessories

MotionConnect	Radio module for use with wireless remote controls	UMCRTX1
MotionPad 24	24-channel remote control with group function	UCLINK8+2
MotionPad 24	24-channel wireless remote control with group function	DR72GW
MotionPad 72	72-channel remote control with group function	DR72GW
MotionPad 72	72-channel wireless remote control with group function	DR72GWWL
Neutrik Cable XLR 8+2	Power & data cable for remote controls or link	UCLINK8+2_1M50 ... 300M
USB Loader	USB to XLR 8+2 cable for firmware update	UMDUSBNC10RS485

- Individual or group control of electric hoist with a capacity ranging from 250 to 2000 kg.
- Limited power supply ? Set a limit on how many hoists can be operated at the same time.
- E-stop button allowing an immediate group stop if a dangerous situation occurs.
- Phase indicator and global status LEDs to check your power supply input and operation.
- Robust metal enclosure with black epoxy coating.
- Brackets can be fixed at the rear for wall-mounting or at the front for rack mounting.
- Cable exits at the top or bottom to suit the configuration of your installation.
- Power input : hard-wired 3P+N+E 63A | Power rating 380~415V / 3 Ph / 47~63 Hz
- Output : hard-wired 3P+E 16A

MotionPad

Effortless management of large installations

Conveniently take control of one or several linked controllers with our MotionPad !
Use its group buttons to swiftly recall different hoist selections that you can configure in advance or on the go, and work without boundaries thanks to our optional wireless module.



1.

Group management

Recall your different loads and areas without hassle !

Users can store, recall and delete up to 20 groups directly from the remote using dedicated RGB backlit buttons.



2.

Adjust feature

Do you have just one hoist that is not correctly positioned ?

Hold the selector down to use the adjust feature, allowing you to control just this particular hoist without the need to remove and redo your current selection.



3.

Wired or wireless

Move around your installation freely with our optional wireless module !

If your battery goes low, just use our universal single cable to operate your hoists and charge your remote at the same time



24 TO 72 CHANNELS



MotionPad 24



MotionPad 12



MotionPad 72

MotionPad Feature :

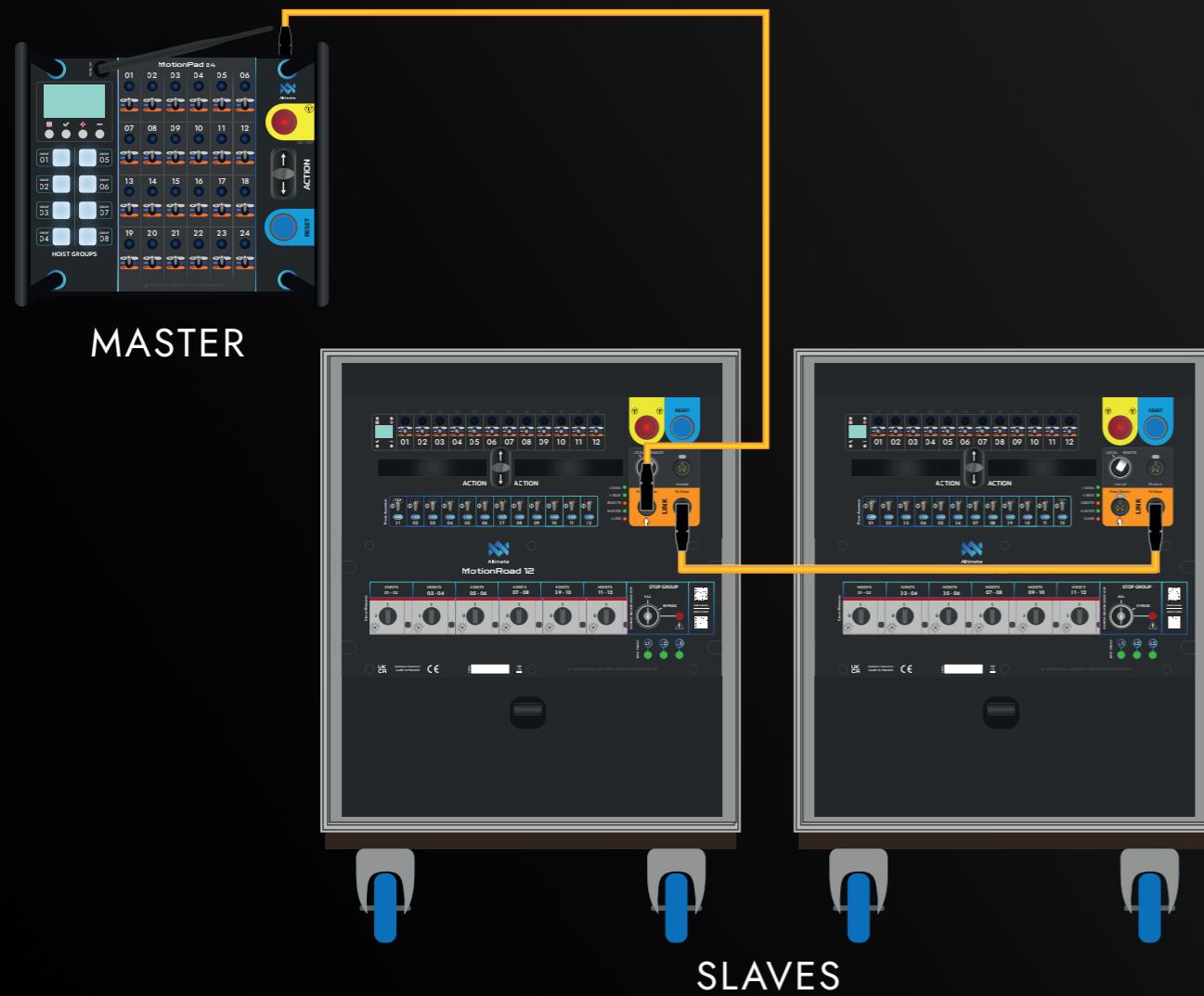
Control Type	Channels	Reference	WxDxH (cm)
Wired	12	DR12W	26x16x12
	24	DR24W-G	29x24x12
	48	DR48W-G	33x26x12
	72	DR72W-20G	38x29x12
Wireless	12	DR12W-WL	26x16x12
	24	DR24W-WL-G	29x24x12
	48	DR48W-WL-G	33x26x12
	72	DR72W-WL-20G	38x29x12

<i>Accessories</i>	
MotionConnect (wireless module)	UMCRTX1
Neutrik Cable XLR 8+2	UCLINK8+2
AC Adaptor	UMDCHARGEUR24
USB Loader	UMDUSBNC10RS485

- E-stop button allowing an immediate group stop if a dangerous situation occurs.
- A small OLED screen with 4 buttons for settings and information messages.
- Backlit RGB buttons and channel indicator for clear operations.
- Program and name your groups in advance using our PC software.
- Internal lithium battery for increased lifespan and long work sessions of up to two days !
- The battery can be charged while working by simply connecting it to the main controller.
- Fitted with motion sensor to automatically set it in and out of power saving mode.
- AC adapter available to charge your remote using an external power source.

Wired link system

Link several controllers together to control more channel simultaneously.



- Simply plug the cable from one controller to another. The first controller becomes a master and your system operates as one.
- When controllers are linked together, all emergency stop buttons remain fully operational.
- Our system continuously checks that no controller are reporting any error, in which case the system would stop until the operator has performed a reset.

Wireless protocol

Move around your installation with our wireless remotes



- Connect the wireless module to the controller as you would connect a wired remote. After a simple pairing process, your controller is ready to operate wirelessly!
- To make sure you stay in control at any given time, our protocol provides constant feedback between the remote and the controller, stopping operations if the communication is lost. We use a sub 1Ghz frequency to avoid interferences and offer a long range of operation.

We use only one type of shielded cable for all our connections, keeping your inventory easy to manage. If your battery goes low, connect it to the controller to operate as a wired remote while charging.

VisionCell

Wired & wireless load cell system fully integrated with our digital controllers

VisionCell is a load-measurement system, based on a 5-ton capacity load cell, which fully integrates with our range of controllers.

Capable of operating wirelessly or on wire according to your project needs, up to 128 load cells can be used on one installation. They use a rechargeable lithium battery that can be charged directly in its transport case. Load readings are available on the controller or its remote as well as on the load cell display.

1. Direct reading on controllers

Fully integrated by design with our digital controllers for a convenient way to monitor loads. Selecting hoists on a controller or its remote gives you a direct information of how much load is at your fingertip !

And if you just need a simple reading, use it as a standalone with its built-in display, no setup required !



2. Wired and wireless use

VisionCell can be connected to the receiver either way, it uses a single cable for power and data or a single sub-Ghz frequency for wireless connections.

You get the best of both worlds, it's up to you to decide what suits best your installation or your current job !



WATER PROOF · STAINLESS STEEL BODY · LITHIUM BATTERY
BUILT-IN DISPLAY · HIGH ACCURACY · 360° RGB SIGNALS



3.

Highest safety levels

Monitor in real time each static and dynamic load of your rigging points.

Set overload or underload alerts for each load cell and choose to trigger a flashing alert on the cell and on the controller, but you can also set to stop your hoists automatically if such case occurs.



4.

Integration with other systems

The load cells and receiver are equipped with I/O as standard, in order to send and receive information to other audible or visual warning devices (siren, flashing light...)

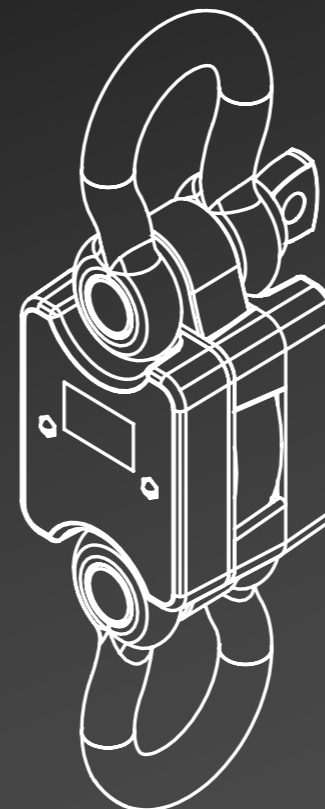


5.

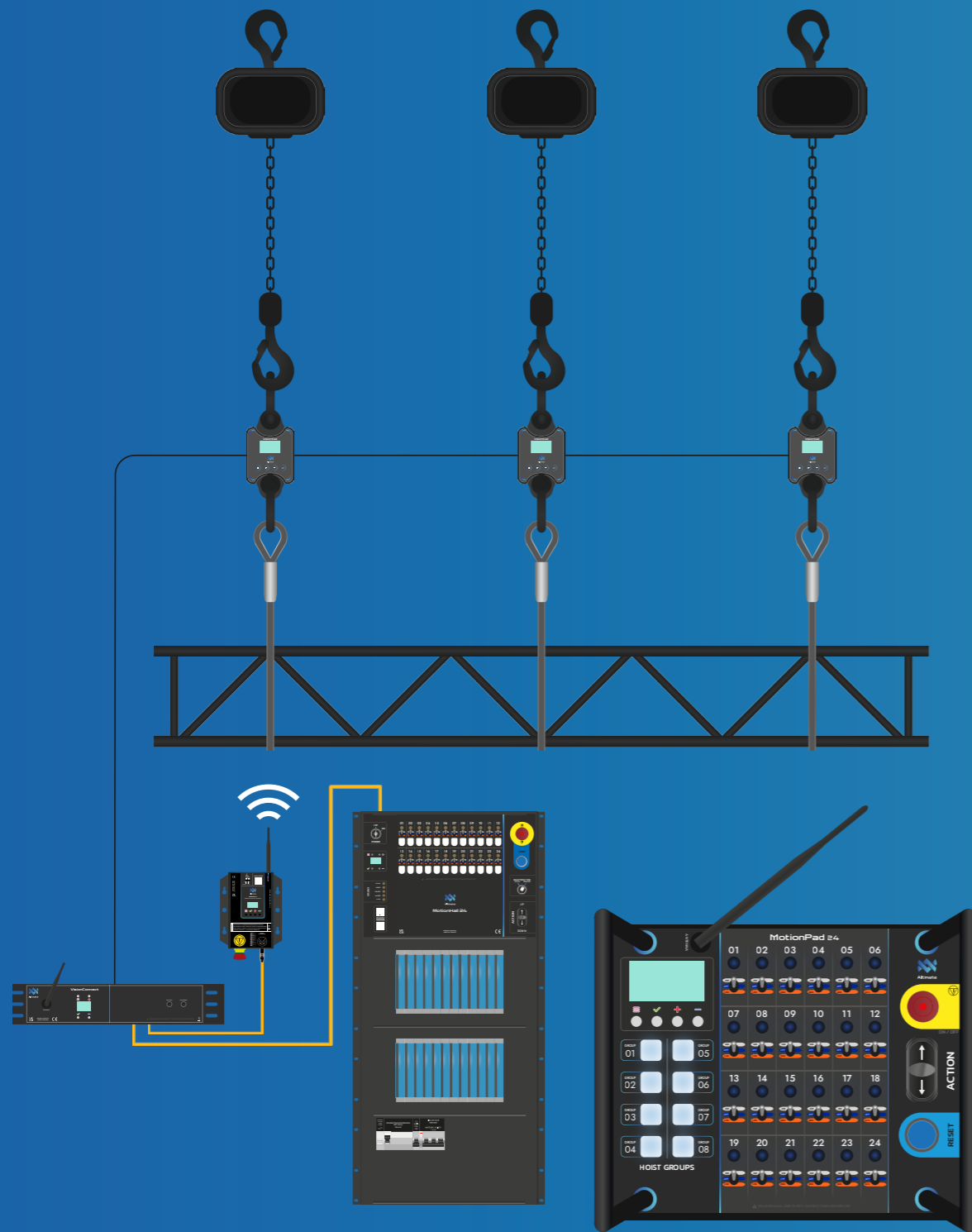
RGB lighting for 360° signals

A powerful RGB LEDs design to give you a clear understanding of what's going on, whether you're 20 meters below the load cells or standing above on catwalks.

Status, alert, identification, you will not miss anything happening on your system !



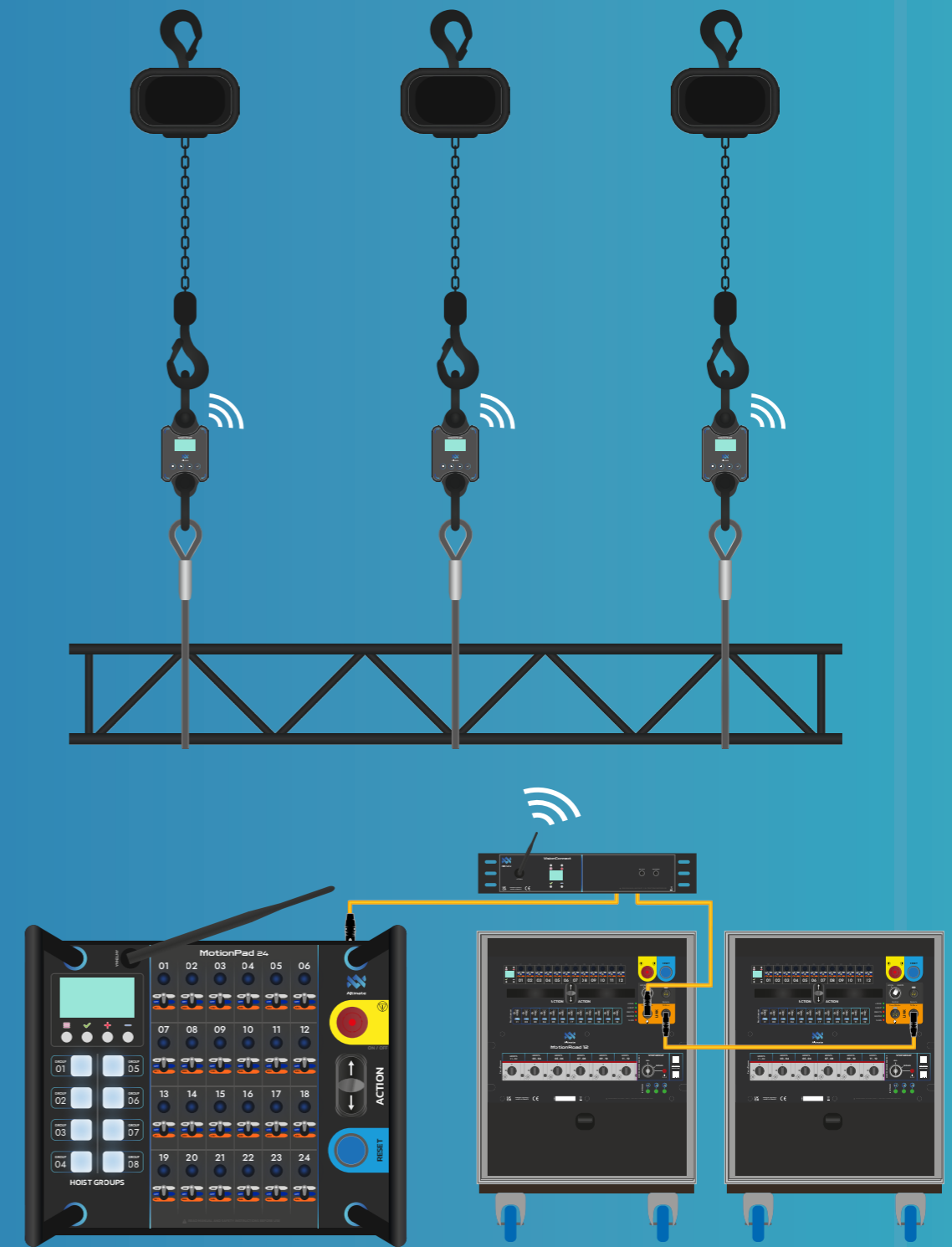
SYSTEM OVERVIEW : WIRED & WIRELESS



Our range of load cell monitoring system shares the same philosophy as our product portfolio of digital controllers, being able to work on choice with wired connections only, fully wireless, or a mix of both.

In illustration above, the load cells are wired to the receiver, but the controller is operated wirelessly. You can monitor your loads on the go while working around on your installation.

SYSTEM OVERVIEW : WIRELESS & WIRED



This other configuration above shows our load cells using wireless transmission to communicate with the receiver, while the two controllers are linked and operated using a wired remote.

Build-up of tailor made control and monitoring system dedicated to your application is limitless.

VisionConnect

2U 19" rack receiver for wired and wireless use, with high number of connections as standard for optimal integration.



CheckMate

Test system with independant brake selection for double brake hoists in compliance with EN17026:2020



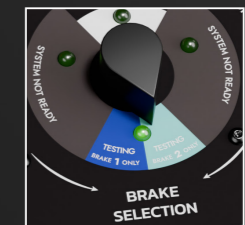
VisionCharge

Transport case for load cells with integrated slide-in charging system.



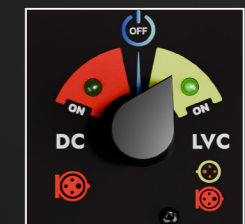
1. Independant brake selection

Our testing case let you select which brake you want to use when performing a load test, making sure that any brake can hold the load on their own.



2. For DC and LVC hoist

CheckMate can be used both with direct control and low voltage control hoists, you simply need to select the desired hoist type on the test case. For LVC hoists, wiring can be done to your requirements.



3. Suitable for any brand of hoist

Our universal system can be adapted to virtually any brand of hoist, while the connector we use is IP67 to preserve the hoist's IP rating.



WallMate

The right solution for fixed installations and venues



These Wallmate controllers have proven their values throughout the years and will fit the needs of most installations.

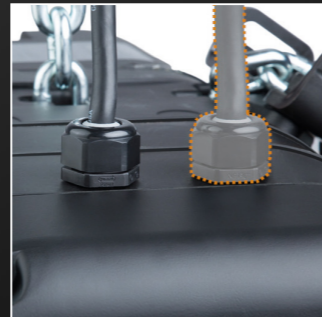
Usually operated with a remote allowing the controller to be installed in a technical area, their robust in-house designed enclosure will last as long as your building.

1.

Direct or low voltage control

These controllers are available in direct control or low voltage control depending on the kind of hoist you are using.

Direct control hoists use the same cable for power and control whereas.

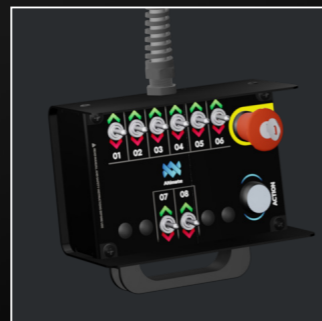


2.

Remote or local control

Remote control versions are operated with a robust wired handset, offering hoist selection, Go and E-Stop buttons.

The remote comes with a 15 meters cable as standard, but other lengths are available on demand.



3.

Designed for fixed installations

Mounting holes at the back allow the controller to be easily mounted to wall.

The hoist power and control cables are connected using screw terminal blocks and exit the housing through cable glands.



2 TO 24 CHANNELS



WallMate Feature :

Control Type	Hoist Type	Channels	Reference	WxDxH (cm)
Local Control	DC Hoists	2	UMC02VW	50x18x50
		4	UMC04VW	50x18x50
		6	UMC06VW	50x18x50
		8	UMC08VW	50x18x50
		12	UMC12VW	50x18x95
		16	UMC16VW	50x18x95
		24	UMC24VW	90x18x95
	LVC Hoists	2	UMC02W	50x18x50
		4	UMC04W	50x18x50
		6	UMC06W	50x18x50
		8	UMC08W	50x18x50
		12	UMC12W	50x18x95
		16	UMC13W	50x18x95
		24	UMC24W	90x18x95
Remote Control	DC Hoists	2	UMC02ADVW	50x18x50
		4	UMC04ADVW	50x18x50
		6	UMC06ADVW	50x18x50
		8	UMC08ADVW	50x18x50
		12	UMC12ADVW	50x18x95
		16	UMC16ADVW	50x18x95
		24	UMC24ADVW	90x18x95
	LVC Hoists	2	UMC02ADW	50x18x50
		4	UMC04ADW	50x18x50
		6	UMC06ADW	50x18x50
		8	UMC08ADW	50x18x50
		12	UMC12ADW	50x18x95
		16	UMC16ADW	50x18x95
		24	UMC24ADW	90x18x95

- Individual or group control of electric hoists with a capacity ranging from 250 to 2000 kg.
- Thermal-magnetic circuit breakers to protect hoists from surges and short-circuit.
- E-stop button with key, allowing an immediate group stop if a dangerous situation occurs.
- Phase indicator LEDs to check your power supply input.
- Robust metal enclosure with black epoxy coating.
- Cable glands at the top or bottom to suit the configuration of your installation.
- Power input : hard-wired 3P+N+E 32A | Power rating 380~415V / 3 Ph / 47~63 Hz
- Output : hard-wired 3P+E 16A

RoadMate

The standard solution for rental companies



Probably the easiest format to store on your shelf, load at the back of your truck and deploy on the field !

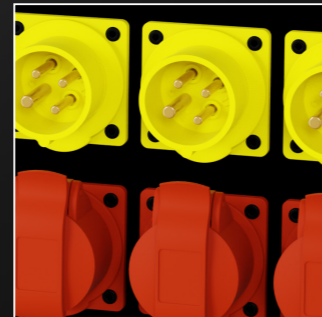
A simple and reliable solution for you to shape up your stage, our flight case controllers will not let you down.

1.

Direct or low voltage control

Our controllers are available in direct control or low voltage control depending on the kind of hoist you are using.

Direct control hoists use the same cable for power and control whereas low voltage hoists use two separate cables.



2.

Remote or local control

Remote control versions are operated with a strong wired handset, offering hoist selection, Go button and E-Stop.

The remote comes with a 15 meters cable as standard, but other lengths available on demand.

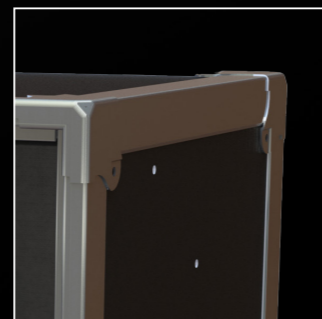


3.

Classic flight case design

Because there are no events without a flight case, our controllers are available in this industry standard.

Easy to handle and durable, this long-lasting format is an ideal addition to your rental fleet !



2 TO 12 CHANNELS



RoadMate Feature :

Control Type	Hoist Type	Channels	Reference	WxDxH (cm)
Local Control	DC Hoists	2	UMC02VF	63x54x40
		4	UMC04VF	63x54x40
		6	UMC06VF	63x54x40
		8	UMC08VF	63x54x68
		12	UMC12VF	63x54x68
	LVC Hoists	2	UMC02W	63x54x40
		4	UMC04W	63x54x40
		6	UMC06W	63x54x40
		8	UMC08W	63x54x68
		12	UMC12W	63x54x68
Remote Control	DC Hoists	2	UMC02ADV	63x54x40
		4	UMC04ADV	63x54x40
		6	UMC06ADV	63x54x40
		8	UMC08ADV	63x54x68
		12	UMC12ADV	63x54x68
	LVC Hoists	2	UMC02ADW	63x54x40
		4	UMC04ADW	63x54x40
		6	UMC06ADW	63x54x40
		8	UMC08ADW	63x54x68
		12	UMC12ADW	63x54x68

- Individual or group control for electric hoists with a capacity ranging from 250 to 1000 kg.
- Thermal-magnetic circuit breakers to protect hoists from surges and short-circuit.
- E-stop button with key, allowing an immediate grouped stop if a dangerous situation occurs.
- Phase indicators LEDs (all) with automatic phase alignment of the input (remote versions).
- Sturdy wooden case with reinforced metal corners, handle(s) & storage space at the back.
- Power rating: 380~415V / 3 Ph / 47~63 Hz
- Power input: CEE / 32A / 3P+N+E
- Output: CEE / 16A / 3P+E

BoxMate

Affordable and easy to carry, a smart choice for any rigger



A comprehensive range of controllers fitted in a tough, long-lasting polymer case reinforced with an internal galvanized steel frame. Build to last, it will serve you well !

Available in different formats, it can be equipped with our digital link system and use a simple remote for more convenience during operations.

1. Direct or Low Voltage Control

These controllers are available in direct control or low voltage control depending on the kind of hoists you are using.

Direct control hoist use the same cable for power and control whereas low voltage hoists use two separate cables.



2. Link System for Flexibility

As an option the controllers can be fitted with a link module, allowing to operate several controllers at once.

Safe and easy to use, this link system is explained in more details further in this brochure.



3. Remote Pickle

This optional wired remote offers a Up, Down and E-Stop buttons for a single controller or a linked system.

The remote comes with a 15 meters cable as standard and connects to the 'Link In' XLR-10 connector of the controller.



2 TO 8 CHANNELS



BoxMate Feature :

Channels	Hoist Type	Connectors	Link System	Power Input	Reference	WxDxH (cm)	
2	DC	CEE	No	16A	UMCDC02V16	33,5x30 x15	
				32A	UMCDC02V32		
			Yes	16A	UMCDC02VLG16		
				32A	UMCDC02VLG32		
	LVC		No	16A	UMCVL02V16		
				32A	UMCVL02V32		
			Yes	16A	UMCVL02VL16		
				32A	UMCVL02VL32		
4	DC	CEE	No	32A	UMCDC04V	46,5x36 x17,5	
			Yes		UMCDC04VLG		
		CEE + Harting	No		UMCDC04VH		
			Yes		UMCDC04VHLG		
		CEE + Socapex	No		UMCDC04VS		
			Yes		UMCDC04VSLG		
	LVC	CEE	No		UMCVL04V		
			Yes		UMCVL04VL		
	6	DC	CEE		No	UMCDC06V	55,5x43 x21
					Yes	UMCDC06VLG	
		LVC			No	UMCVL06V	
					Yes	UMCVL06VL	
8	DC	CEE	No	UMCDC08V			
			Yes	UMCDC08VLG			

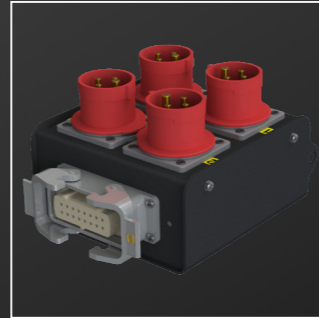
- Individual or group control of electric hoists with a capacity ranging from 250 to 1000 kg.
- Thermal-magnetic circuit breakers to protect hoists from surges and short-circuit.
- E-stop button with key, providing an immediate group stop if a dangerous situation occurs.
- Phase indicator lights(all) with automatic phase alignment of the input (low lotage only).
- Strong, waterproof and impact resistant ABS case and galvanised steel internal frame.
- The 4 channels version has the option of having an extra Harting or Socapex connector.
- An optional link system is available for simultaneous operation of several controllers.
- The link system also allow the use of an optional a remote pickle.
- Power rating : 380~415V / 3 Ph / 47~63 Hz
- Power input : CEE / 32A / 3P+N+E
- Output : CEE / 16A / 3P+E

Hoist Break out

For hoist power and control distribution

HARTING BREAK OUT BOX

- Robust metal enclosure with epoxy powder coating -
- 16 pins Harting connector -
- Included clamp for truss mounting -
- Eye for safety sling connection -



SOCAPEX BREAK OUT BOX

- Robust metal enclosure with epoxy powder coating -
- 19 pins Socapex connector -
- Included clamp for truss mounting -
- Eye for safety sling connection -



HARTING BREAK OUT CABLES

- 16 pins Harting connector -
- H07RN-F cable with 1.5 mm² wires -



SOCAPEX BREAK OUT CABLES

- 19 pins Socapex connector -
- H07RN-F cable with 1.5 mm² wires -



Hoist Cables

For hoist power and control distribution

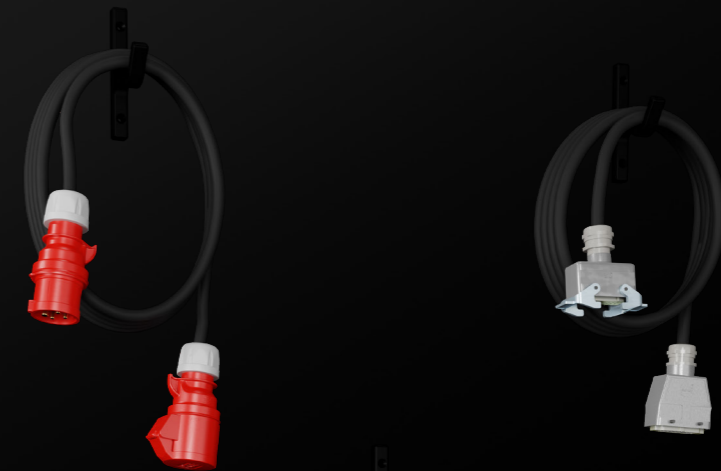
DC HOIST CABLES

For direct control hoists -
CEE Red plugs 3P+E -
4x 1.5mm² wires & H07RN-F cable -



SOCAPEX MULTICORE CABLES

- 19 pins Socapex connector
- 19x 1.5 mm² wires & H07RN-F cable



LVC HOIST CABLES

For low voltage control hoists -
CEE Red plugs 3P+E and CEE yellow 2P+E -
7x1.5 mm² wires & H07RN-F cable -



SINGLE PHASE HOIST CABLE

For single phase hoists -
CEE yellow plugs 2P+E and CEE blue plugs 2P+E -
6x 1.5 mm² wires & H07RN-F cable -



HARTING MULTICORE CABLES

16 pins Harting connectors -
16x 1.5 mm² wires & H07RN-F cable -



Hoist break out Feature :

Product	Connector In Type	Connectors Out Type	Lenght	Reference
Break-out Box	Harting Male	4x CEE Red Female	1 meter	BBHM-4RCF
		4x CEE Yellow Female		BBHM-4YCF
	Harting Female	4x CEE Red Male		BBHF-4RCM
		4x CEE Yellow Male		BBHF-4YCM
	Socapex Male	4x CEE Red Female		BBSM-4RCF
		4x CEE Yellow Female		BBSM-4YCF
	Socapex Female	4x CEE Red Male		BBSF-4RCM
		4x CEE Yellow Male		BBSF-4YCM
Break-out Cable	Harting Male	4x CEE Red Female	1 meter	BBHM-4RCF
		4x CEE Yellow Female		BBHM-4YCF
	Harting Female	4x CEE Red Male		BBHF-4RCM
		4x CEE Yellow Male		BBHF-4YCM
	Socapex Male	4x CEE Red Female		BBSM-4RCF
		4x CEE Yellow Female		BBSM-4YCF
	Socapex Female	4x CEE Red Male		BBSF-4RCM
		4x CEE Yellow Male		BBSF-4YCM

Hoist cables Feature :

Cable type	Lenght (meter)	Reference
DC hoist cables	5	DC-CAB-5
	10	DC-CAB-10
	15	DC-CAB-15
	20	DC-CAB-20
LVC hoist cables	5	LV-CAB-5
	10	LV-CAB-10
	15	LV-CAB-15
	20	LV-CAB-20
Single phase hoist cables	5	SP-CAB-5
	10	SP-CAB-10
	15	SP-CAB-15
	20	SP-CAB-20
Harting multicore cables	5	HT-CAB-5
	10	HT-CAB-10
	15	HT-CAB-15
	20	HT-CAB-20
Socapex multicore cables	5	SC-CAB-5
	10	SC-CAB-10
	15	SC-CAB-15
	20	SC-CAB-20

Custom Solution

Your controller, just the way you want it

YOUR SPECIFICATIONS

- Choose the number of channels and outputs you need -
- Choose the type of controls you want -
- Choose additional features to make your job easier -



3D DESIGN

- We use SolidWorks to design your controller -
- This allow us to anticipate issues before they even happen -
- Validate any aspect of your solution before production -



SINGLE UNIT OR SERIES

- A unique controller for a specific application -
- A small or large batch to standardize your inventory -
- Custom serigraphy or OEM is possible -



MADE IN FRANCE

- All our hoist controllers are designed, assembled and tested in Lille -



CUSTOM SOLUTION EXAMPLES

RENTAL COMPANY

MPM Audiolight

MPM wanted to give extra rigging

They required a controller that could integrate in these rack, using the spare space that they usually have. They also needed the ability to link the controller and operate them locally or remotely.

They had a preference for Harting connectors, that their technician are used to repair on the field if needed.



VENUE

MC93, Maison de la Culture, Paris Area

MC93 required 50 channels of control for the 10 pipes holding lighting fixtures and decors above its stage, each fitted with 5 hoists.

They needed a simple system, with one central unit wired to all their hoists and a 5 channels remote, in order to be able to lift each lighting pipe one by one, by simply connecting the remote to different outputs.





Altimate

10 AVENUE DE LA ROTONDE
PLATEFORME MULTIMODALE
59160 - LOMME - FRANCE

+33 320 009 210

contact@ultimate-rigging.com

WWW.ALTIMATE-RIGGING.COM